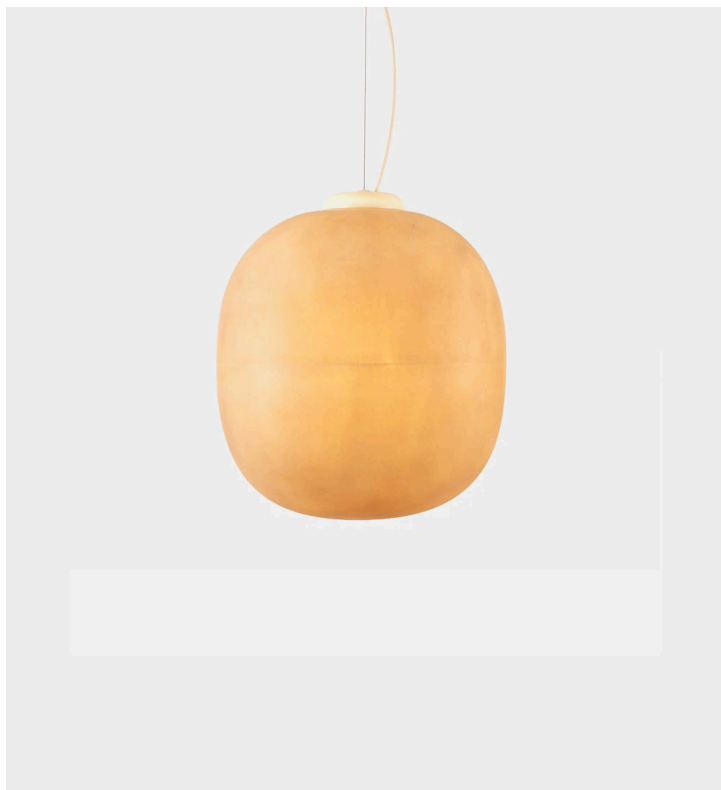


Puffball Pendant, Large

Matter Made



Product Type Pendant

Puffball, a collection of minimal lamps, draws inspiration from the rounded caps and columned stalks of wild mushrooms and toadstools. The chunky silhouettes, made of raw fiberglass and tumbled or painted aluminum, give off a warm luminescent glow.

Materials

Fiberglass, Aluminum, Brass

Dimensions

L 22" x W 22" x H 23"

L 55.9 cm x W 55.9 cm x H 58.4 cm

Finishes

- Raw Fiberglass Shade
- Tumbled Aluminum Canopy
- Ivory Canopy

Weight

10 lbs

4.5 kgs

Shipping Carton

L 26" x W 26" x H 26"

L 66cm x W 66cm x H 66cm

Shipping Weight

29 lbs

13.2 kgs

Lead Time

8-10 weeks

Light Source

Tala® Porcelain III G40 LED Bulb

2700k

540lm

6W

120V or 220V input

Dimming

Triac or ELV

Canopy

Dia 6" x H 1.25" / Dia 15.2 cm x H 3.2 cm

Cord Length

60" / 152.4 cm cord provided

Longer cords available upon request

Certification

UL, CE

UPON ORDERING THIS DESIGN

Specify any details needed to place order.

These should be selection items on the website.