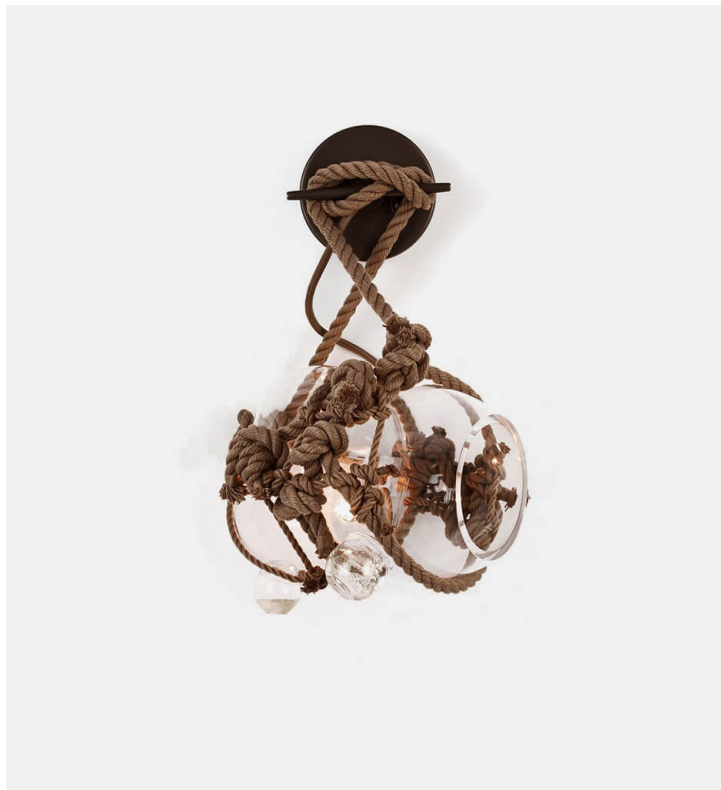


## Knotty Bubbles Sconce

Roll & Hill



**Product Type** Sconce

Inspired by Japanese packaging, buoys, and shibari, *Knotty Bubbles* is a sculptural light made of hand-blown glass 'bubbles' bound together with knotted rope.

### Dimensions

#### Small

W28cm x D28cm x H48cm

W11" x D11" x H19"

#### Weight

4,5 kg

#### Large

W43cm x D43cm x H69cm

W17" x D17" x H27"

#### Weight

9,1kg

#### Voltage (V)

120 or 240 V

#### Incandescent Illumination (120V/240V)

Socket: E12/E14

Bulb: 2 x 25 Watt A15 antique

Wattage: 50 Watts

Lumens: 70 Lumens

Color Temperature: 2200 Kelvin

Dimming: Triac or ELV

#### Socket: E26

Bulb: 2 x 40 Watt A19 antique

Wattage: 80 Watts

Lumens: 260 Lumens

Color Temperature: 2200 Kelvin

Dimming: Triac or ELV

#### Halogen Illumination (120V/240V)

Socket: G4

Bulb: 2 x 20 Watt G4 halogen

Wattage: 40 Watts

Lumens: 600 Lumens

Color Temperature: 2800 Kelvin

Dimming: Triac or ELV

#### Certifications

UL, cUL (120V) CE, CB (240V)

UPON ORDERING THIS DESIGN

Specify any details needed to place order.

These should be selection items on the website.