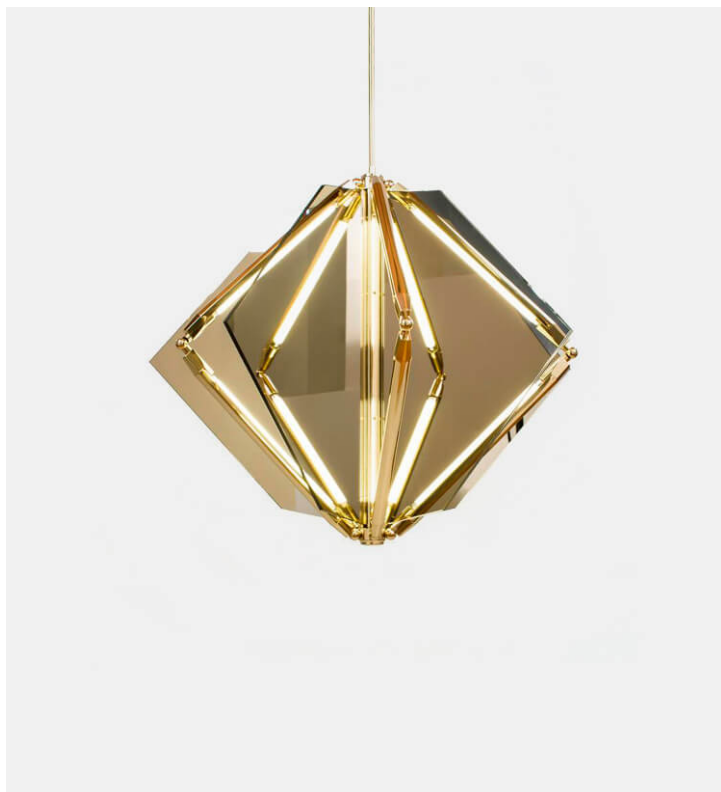


Echo 1

Bec Brittain



Product Type Ceiling

Echo uses fins of mirror radiating from a central axis to reflect beams of light. LED tubes are turned inward to bounce off the glass; the light becomes both softened and multiplied. Also available with fins of glass which diffuse the light and glow softly.

Dimensions

Ø34" x H24"

Ø86,5cm x H61cm

Weight

18,6 kg

Voltage (V)

120 or 240 V

LED Illumination

24 VDC T5 LED tube

2700 Kelvin

90 CRI

Electrical

Wattage: 30 Watt

Lumens: 2400 Lumens

110 - 240 VAC

277 VAC upon request

UPON ORDERING THIS DESIGN

Specify any details needed to place order.

These should be selection items on the website.