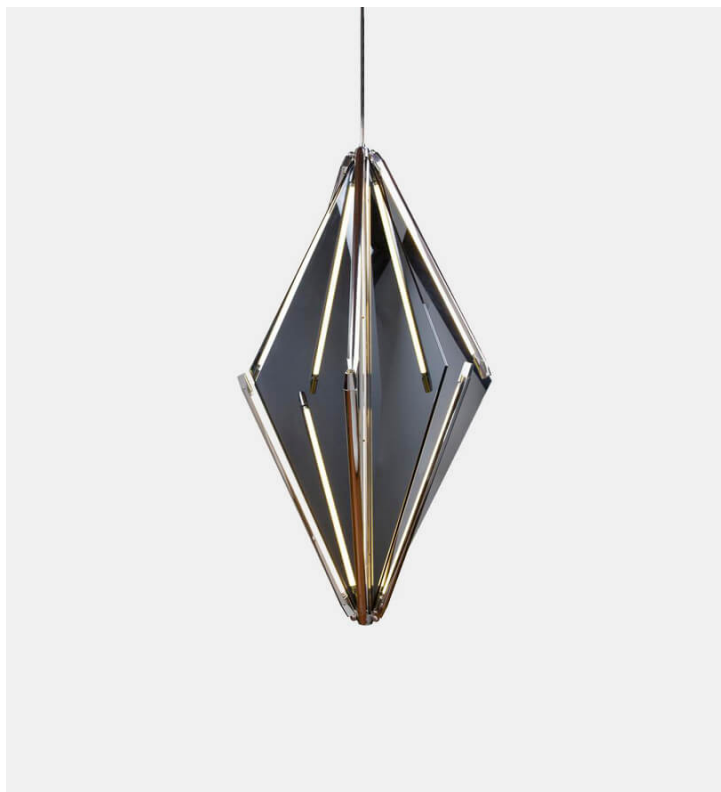


## Echo 3

Bec Brittain



**Product Type** Ceiling

Echo uses fins of mirror radiating from a central axis to reflect beams of light. LED tubes are turned inward to bounce off the glass; the light becomes both softened and multiplied. Also available with fins of glass which diffuse the light and glow softly.

**Dimensions**

Ø28" x H47"

Ø71cm x H 119,5cm

**Weight**

36,3 kg

**Voltage (V)**

120 or 240 V

**LED Illumination**

24 VDC T5 LED tube

2700 Kelvin

90 CRI

**Electrical**

Wattage: 60 Watt

Lumens: 4800 Lumens

110 - 240 VAC

277 VAC upon request

**UPON ORDERING THIS DESIGN**

Specify any details needed to place order.

These should be selection items on the website.