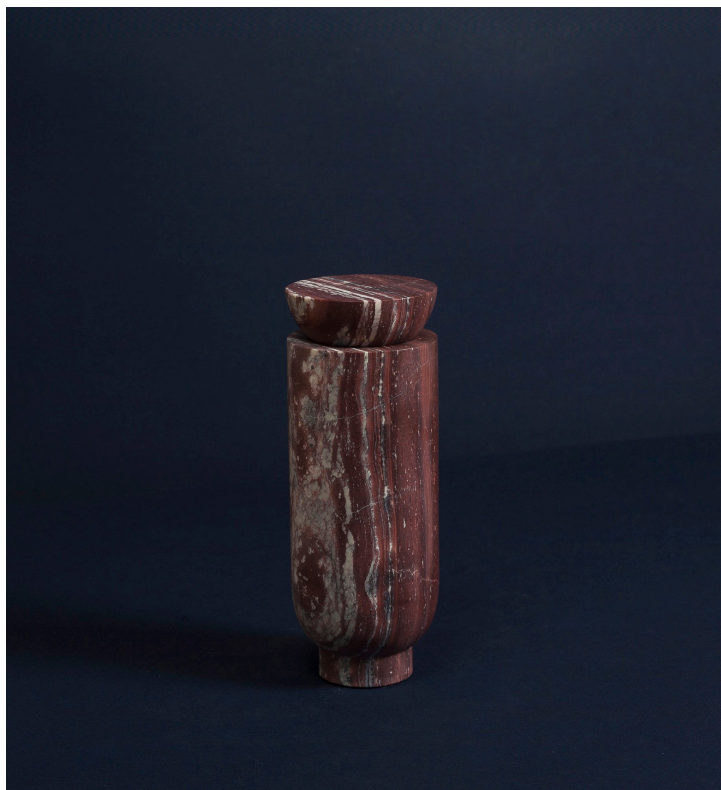


## Monolith Series - NN1

Rodrigo Bravo



**Product Type**      Object

Monolith Series, created by Rodrigo Bravo, are carved from single pieces of Combarbalita, a volcanic stone only found in his native Chile. Its heterogeneous composition of different minerals allows it to produce a wide variety of colors. Monoliths are the result of the symbiosis of contemporary design and traditional craftsmanship.

Dimensions: Ø 3 1/2" x H 8"

*Handmade in Chile.*

*Colors and patterns shown may not be an accurate representation of the object finishing, due to the natural characteristics of the stone.*

### UPON ORDERING THIS DESIGN

Specify any details needed to place order.

These should be selection items on the website.