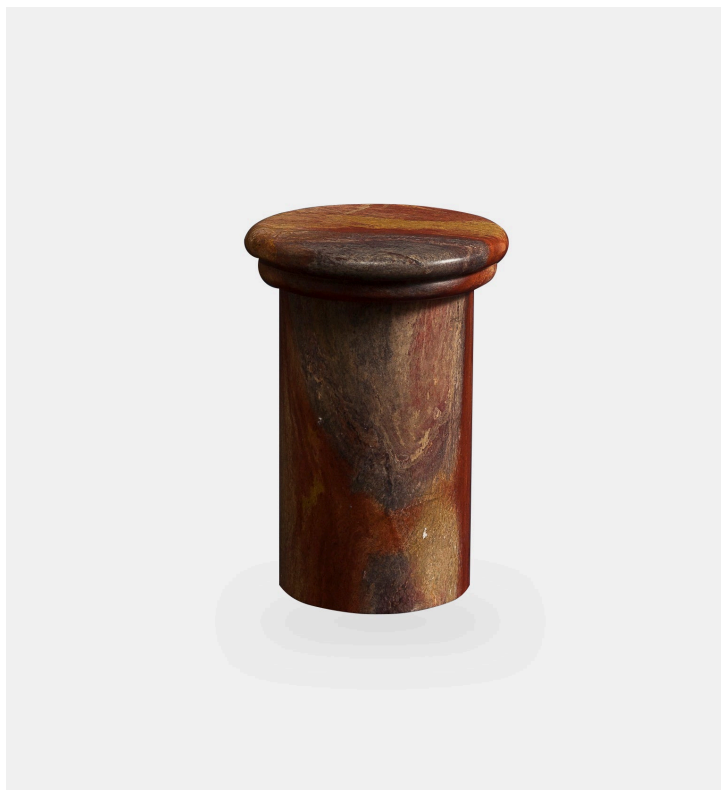


Monolith Series - VV1

Rodrigo Bravo



Product Type Object

Monolith Series, created by Rodrigo Bravo, are carved from single pieces of Combarbalita, a volcanic stone only found in his native Chile. Its heterogeneous composition of different minerals allows it to produce a wide variety of colors. Monoliths are the result of the symbiosis of contemporary design and traditional craftsmanship.

Dimensions: Ø 3.5" x H 6"

Handmade in Chile.

Colors and patterns shown may not be an accurate representation of the object finishing, due to the natural characteristics of the stone.

UPON ORDERING THIS DESIGN

Specify any details needed to place order.

These should be selection items on the website.