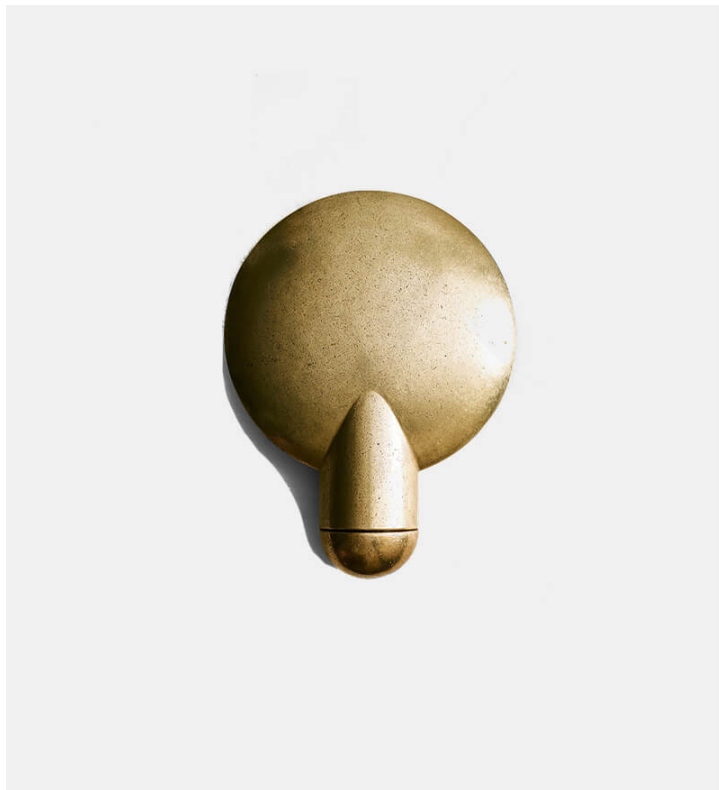


Surface Wall Sconce

Henry Wilson Studio



Product Type Sconce

Sandwiched between the two bronze components, the light source is projected onto the concave backing. The light follows the gentle bowl of the dish and is directed outward, reflecting a warm glow of light onto the opposing surface.

Cast in gunmetal bronze and rumbled to a polished finish, the sconce is sculptural both in use and when switched off.

Dimensions

W11.8" x D4.1" x H15.75"

W30cm x D10,5cm x H40cm

Light Source

E27 / E22 Bulb (not included), Max 460W

Weight

19.8 lbs / 9 kg

UPON ORDERING THIS DESIGN

Specify any details needed to place order.

These should be selection items on the website.