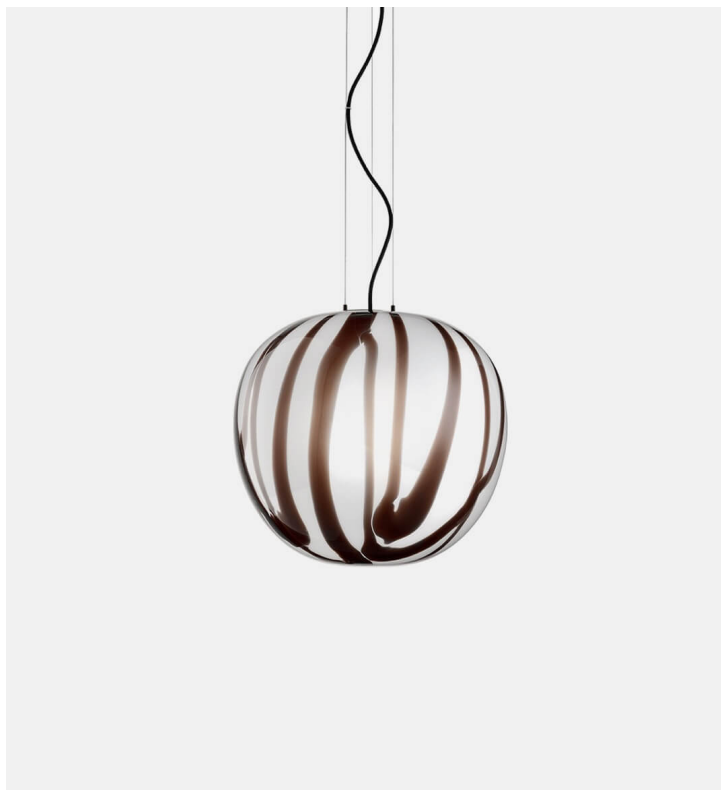


Rotea

Matter Made



Product Type Ceiling

The Rotea pendant collection gets its name and spiraling decoration from the careful and precise spinning motion applied to the glass when being produced.

Roteare, the Italian word for “twirling”, is the technique used by master craftsmen in Murano, Italy to create the blown glass shapes of Rotea. Fixed to a black chrome structure, the internal light bulb enliven the distinctive textures of Rotea, generating light effects passing through transparent and opaque surfaces.

Dimensions

Dia 15.75" x H 14.6"

Dia 40cm x H 37cm

Weight

3.6 kgs

Voltage (V)

120 or 240 V

Light Socket

E26 (120V)

E27 (220V)

Bulb 40W or 60W

Frosted Globe (not included)

Drop Length

90" / 228cm

cable provided

Certifications

UL, CE

UPON ORDERING THIS DESIGN

Specify any details needed to place order.

These should be selection items on the website.