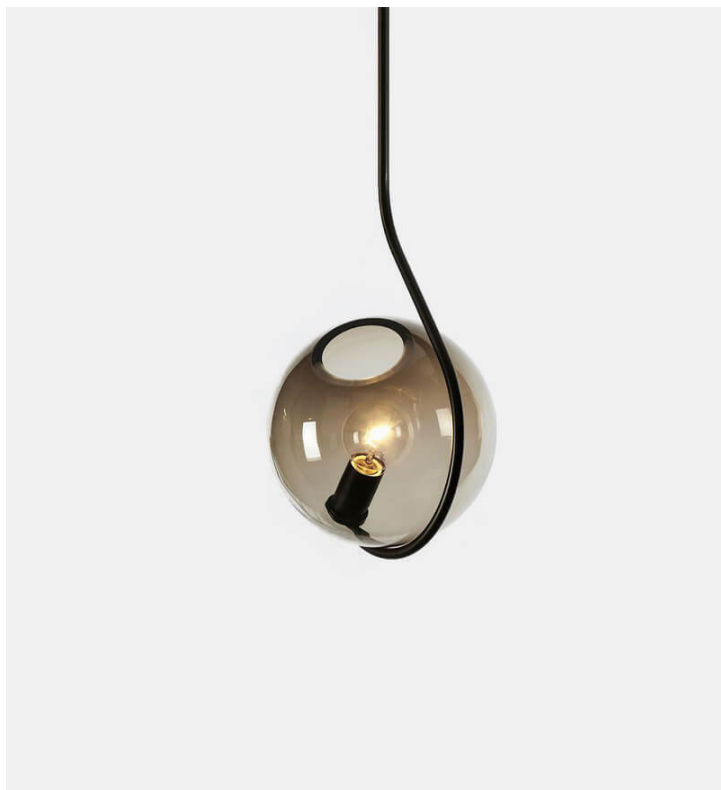


Fiddlehead Pendant

Roll & Hill



Product Type Chandelier

Jason Miller's Fiddlehead derives its name from sprouting ferns. One end of Fiddlehead's long, furling arm gently balances a hand-blown glass globe; the other uses the wall or ceiling as a counterbalance.

Dimensions

L10,5" x W10" x H16"

L27cm x W25cm x H41cm

Weight

2,3 kg

Voltage (V)

120 or 240 V

LED Bulb Illumination

Cream Globe

Socket: E26

Bulb: 6 Watt A19 frosted

Wattage: 6 Watts

Lumens: 250 Lumens

Color Temperature: 2700 Kelvin

Dimming: Triac or ELV

Smoke Globe

Socket: E26

Bulb: 3 Watt G25 Clear

Wattage: 3 Watts

Lumens: 210 Lumens

Color Temperature: 2700 Kelvin

Dimming: Triac or ELV

Clear Globe

Socket: E26

Bulb: 3 Watt G25

ClearWattage: 3 Watts

Lumens: 600 Lumens

Color Temperature: 2700 Kelvin

Dimming: Triac or ELV

Certifications

UL, cUL (120V)

CE, CB(240V)

UPON ORDERING THIS DESIGN

Specify any details needed to place order.

These should be selection items on the website.