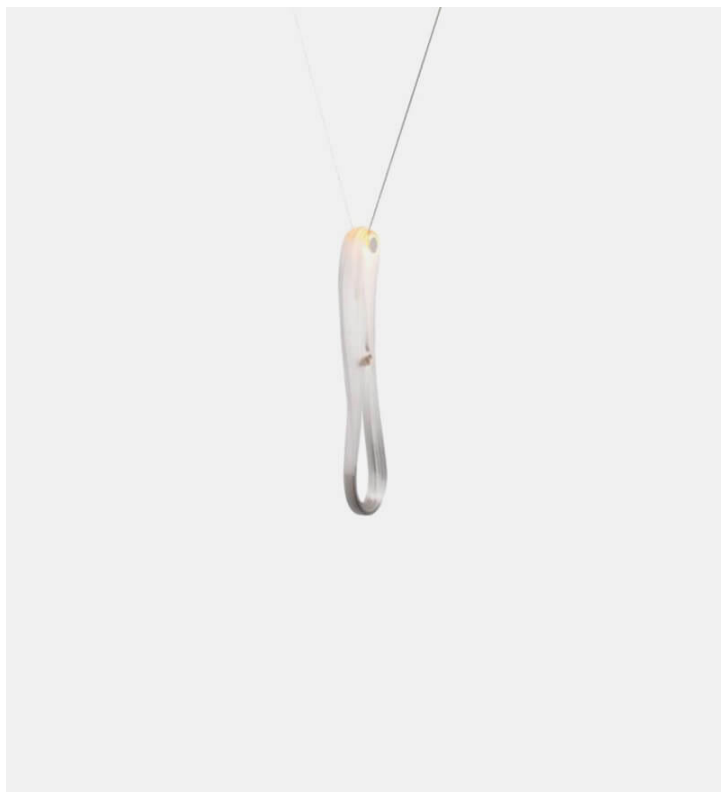


## 87 Series

Bocci



**Product Type** Ceiling

Soda water is used to trap air in a superheated glass matrix, which is vertically stretched and folded back onto itself between pegs numerous times. As the glass cools, the folding motion along the grain of the loop turns the entrapped air into microfilaments that give the piece a pearlescent optical quality. A low-voltage xenon or LED light source is introduced at one end of the loop casting light through the microfilaments and registering a gentle gradient.

**Dimensions**

10"  
300cm

**UPON ORDERING THIS DESIGN**

Specify any details needed to place order.  
These should be selection items on the website.