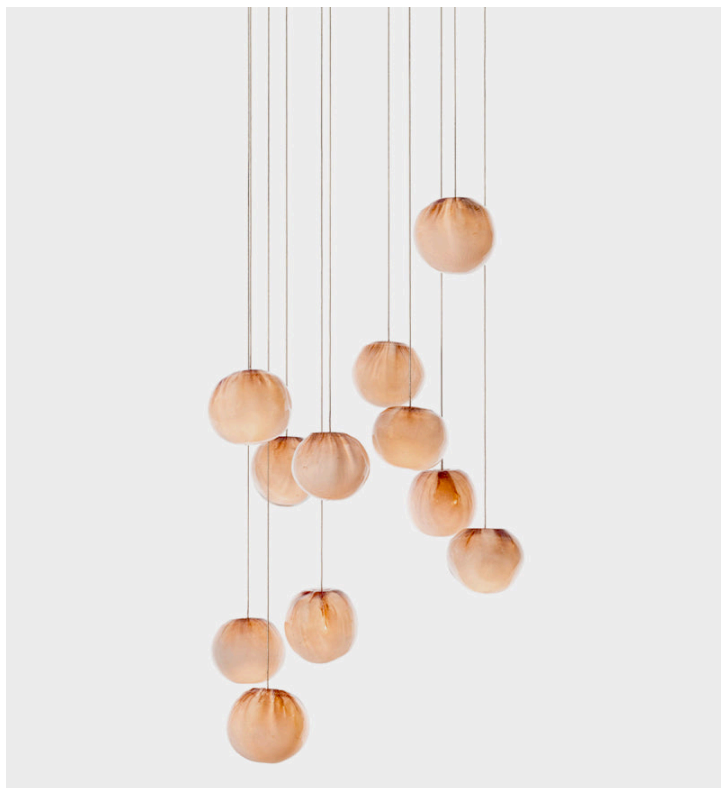


84 Series

Bocci

**Product Type**

Ceiling

A white glass moil is captured inside a fine copper mesh basket and then plunged into hot clear glass. Air is blown into the matrix to gently push the white glass through the mesh, creating a delicate pillowed form that is suspended inside the thick outer layer of clear glass. Sometimes the copper mesh basket folds and crinkles, adding specificity to each piece.

Undulations in the exterior shape are a natural consequence of the fabrication process and accentuate the gentle white pillowing below. A low-voltage xenon or LED light source is introduced into the piece, casting a warm coppery hue.

Dimensions

Ø4,5"

Ø11,43cm

UPON ORDERING THIS DESIGN

Specify any details needed to place order.

These should be selection items on the website.